

Clinical case

Composite restoration of a class IV defect in tooth 21



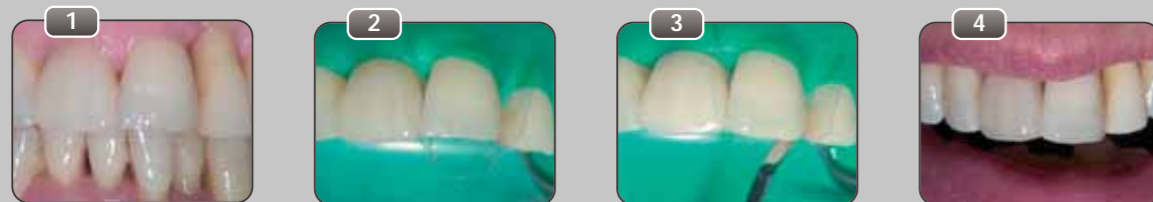
1
Situation after loss of a composite restoration in tooth 21

2
Palatal view of defect

3
Core build-up of dentine with opaque composite

4
Finished restoration

Incisal build-up on tooth 21



1
Loss of incisal edge on tooth 21 due to abrasion

2
Placement of rubber dam and matrices to protect the neighbouring teeth

3
Shaping the incisal edge with translucent enamel base

4
Finished build-up of the incisal edge on tooth 21

Composite restoration of a mesial Class III defect in tooth 21



1
Discoloured from the shiny mesial caries in tooth 21

2
Caries (palatal view)

3
Complete excavation of caries (palatal view), remaining thin enamel vestibular wall

4
Finished restoration (palatal view)



5
Situation after successful restoration of mesio-palatal defect in tooth 21



AMARIS®
Beauty –
Compose it!

Presentation

Art. No. 1930 **Amaris® Set**
set 8 x 4 g syringes (O1, O2, O3, O4, O5, TL, TN, TD), 2 x 1.8 g syringes
Amaris® Flow (HT, HO), accessories

Art. No. 1950 **Amaris® Caps Set**
16 x 0.25 g Caps (each O1, O2, O3, O4, O5, TL, TN, TD), 2 x 1.8 g syringes
Amaris® Flow (HT, HO), accessories

Art. No. 1931 **Amaris® Set SingleDose**
8 x 4 g syringes (O1, O2, O3, O4, O5, TL, TN, TD), 2 x 1.8 g syringes
Amaris® Flow (HT, HO) + 50 Futurabond NR *SingleDose*, accessories

Art. No. 1951 **Amaris® Caps Set SingleDose**
16 x 0.25 g Caps (each O1, O2, O3, O4, O5, TL, TN, TD), 2 x 1.8 g syringes
Amaris® Flow (HT, HO) + 50 Futurabond NR *SingleDose*, accessories

Art. No. 1949 **Amaris® Caps Starter Set**
4 x 0.25 g Caps (each O1, O2, O3, O4, O5, TL, TN, TD), 2 x 1.8 g syringes
Amaris® Flow (HT, HO), accessories

One 4 g syringe in the following shades:

Base shades (opaque)

Art. No. 1933 Amaris® Opaque, O1
Art. No. 1934 Amaris® Opaque, O2
Art. No. 1935 Amaris® Opaque, O3
Art. No. 1936 Amaris® Opaque, O4
Art. No. 1937 Amaris® Opaque, O5
Art. No. 1938 Amaris® O Bleach, OB

Enamel shades (translucent)

Art. No. 1940 Amaris® Translucent light, TL
Art. No. 1941 Amaris® Translucent neutral, TN
Art. No. 1942 Amaris® Translucent dark, TD

16 x 0.25 g Caps in the following shades:

Base shades (opaque)

Art. No. 1953 Amaris® Opaque, O1
Art. No. 1954 Amaris® Opaque, O2
Art. No. 1955 Amaris® Opaque, O3
Art. No. 1956 Amaris® Opaque, O4
Art. No. 1957 Amaris® Opaque, O5
Art. No. 1958 Amaris® O Bleach, OB

Enamel shades (translucent)

Art. No. 1960 Amaris® Translucent light, TL
Art. No. 1961 Amaris® Translucent neutral, TN
Art. No. 1962 Amaris® Translucent dark, TD

2 x 1.8 g syringe in the following shades:

Special shades

Art. No. 1945 Amaris® Flow, High translucent, HT
Art. No. 1946 Amaris® Flow, High opaque, HO

Available from:

VOCO

P.O. Box 767 · 27457 Cuxhaven · Germany · Tel. +49 (4721) 719 - 0 · Fax +49 (4721) 719 - 140 · www.voco.com

creative in research

AMARIS®
Beauty –
Compose it!

Highly aesthetic restorative

- Two simple steps
- Layers like in nature
- Brilliant results

VOCO

creative in research

Natural elegance

Two simple steps – layers like in nature – brilliant results

Easy to learn

For several decades dentists have used an industry standard designed to facilitate communication of shades from a chairside perception to the technician's workbench.

According to this standard, dentists first select a matching shade, apply it and polish it, and then check whether it really matches the tooth. Changes at this point would require re-doing the entire restoration.

The **Amaris**® shade system invites to think differently: the shade impression is developed "as you go". Getting it right requires almost no experience – simply follow the instructions – and enjoy the results!

Dentine shines through enamel – together they define the optical

appearance of the tooth.

Amaris® offers a shade system which follows this natural principle and reduces aesthetic direct restoration to two simple steps.

The base shades O1 to O5

The five opaque base shades cover the entire shade range of dentine. The dentist selects the matching base shade with the help of a shade guide, and applies and cures this material in the first restorative step in the dentine area. The base shade is also used to create mamelons.

The enamel shades TN, TL and TD
In the second step, the selected base shade is either confirmed or adjusted. If the base shade already matches the tooth shade, it is confirmed using the enamel shade TN (Translucent neutral). If the base

shade appears lighter than the tooth, it can be darkened using the enamel shade TD (translucent dark). If the base shade appears too dark, it can be lightened using the enamel shade TL (Translucent light).

The special shades HT and HO

For special effects **Amaris**® offers two flowable special shades. HT (High translucent) allows to create stunning visual depth and is ideal for very translucent incisal edges.

HO (High opaque) is a flowable shade which allows to mask discolourations or to prevent the shining-through of the dark oral cavity.

Handling and polishing

The base and enamel shades have a non-sticky smooth consistency

which allows to spread out the material even to fine layers. The material follows the instrument and does not pull itself back. **Amaris**® has an excellent polishability, and the restorations will become invisible. Natural fluorescence and high colour stability maintain this result long-term.

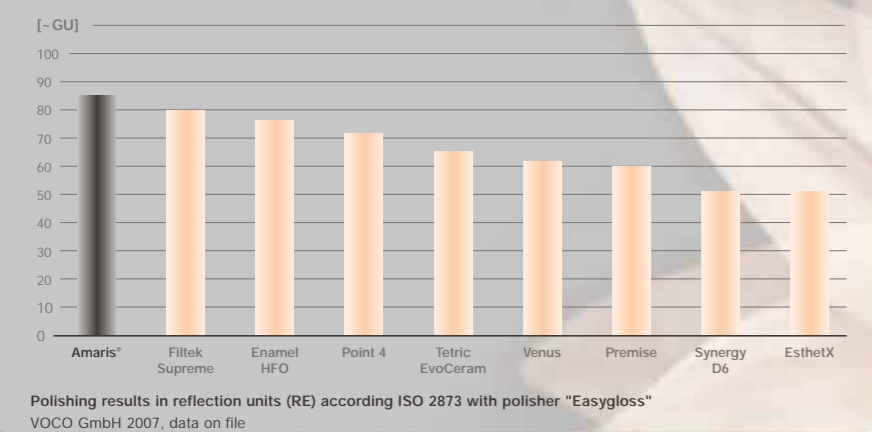
Indications

- Aesthetic restoration of Class III, IV and V cavities in anteriors
- Aesthetic restoration of Class I, II and V cavities in posteriors
- Reconstruction of traumatically damaged anteriors
- Direct and indirect composite veneers, facing of discoloured anteriors
- Correction of shape and shade for improved aesthetics
- Repair of highly aesthetic ceramic restorations, e.g. veneer repair
- Splinting, interlocking of teeth

Advantages

- Two simple steps, perfect results
- Layering like in nature: shades are created from the inside of the tooth
- Easy to learn, fast aesthetic results
- Intuitive approach, no preconceived shades
- Non-sticky consistency is ideal for modelling and shaping
- Long resistance to ambient and chair light
- Optimal polishability
- Natural fluorescence and high colour stability
- Good chameleon effect for invisible restorations

Polishing results in reflection units (RE)



Filtek Supreme, Enamel HFO, Point 4, Tetric EvoCeram, Venus, Promise, Synergy D6, EsthetX are not registered trademarks of VOCO GmbH

Simply beautiful

Natural fluorescence:



Only fluorescence that is comparable to natural tooth substance yields a visual depth effect which is perceived as brilliance and vitality.

VOCO GmbH 2007, data on file

Beautifully simple

Restoration of a Class II cavity after fracture of an amalgam filling in tooth 45



Fractured occlusal-distal amalgam filling in tooth 45



Placement of rubber dam and removal of remaining amalgam. Situation after complete excavation



Opaque dentine base layer applied in increments



Final layer with translucent enamel shade



Finished, polished restoration (vestibular view)



Finished restoration from occlusal 29

Replacement of a composite filling (Class II cavity) in tooth 35



Insufficient mod composite restoration in tooth 35



Situation after removal of the filling and complete excavation



Incremental layers of opaque dentine base shade



Final layer with translucent enamel shade



Finished, polished restoration

Source: Assistant Professor Andreas Braun, DMD
Felix Krause, DMD

Periodontology, Conservative and Preventative Dentistry Clinic,
Centre for Dental and Oral Medicine,
Rheinische Friedrich-Wilhelms University of Bonn,
Welschnonnen St. 17,
53111 Bonn, Germany